

ControlShop

ControlShop™ is a SCADA (Supervisory Control And Data Acquisition) software suite containing a collection of clients and ActiveX® servers that allow read/write data transfer from PLCs or intelligent I/O to other applications. *ControlShop* can be used to take control of PLC data, produce efficiency and productivity reports, and calculate run-time data.

ControlShop has the capability to do more than most SCADA software products at a fraction of the cost. Separate applications with common interfaces—including data logging, trending, alarm annunciation, and batch management—allow for lower prices and faster response times. This SCADA software is compliant with OPC Data Access Standard communication drivers and compatible with all FasTrak SoftWorks PLC *WorkShop™* programming products.



ControlShop Features Save Time and Money

Cost Effective

- Offers unlimited data points with no additional or hidden costs
- Saves time with quick and easy start up; cuts down on training costs

Flexible

- Data can be accessed from any PLC or RTU device
- *ControlShop* is compatible with any application that supports ActiveX controls including Microsoft Excel®, Microsoft Visual Basic®, Visual C++®, Microsoft Internet Explorer, Windows® Scripting Host, and others

Convenient and Easy to Use

- Allows multiple FasTrak SoftWorks applications to communicate and share information at the same time
- Has been designed for 32-bit Windows with very few steps to get started

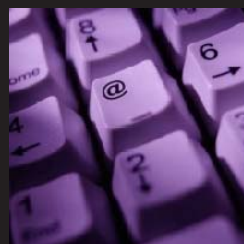
Comprehensive

- Includes OPC Data Access Standard Communication Drivers for all 32-bit *PLC WorkShop* products, which can also be used with OPC-compliant SCADA clients, to insure maximum data reliability
- Contains sample visual components including meter, gauge, and digital number displays, which can be used to enhance user interface projects

ControlShop Clients
Support All PLCs

FasTrak
SoftWorks, Inc.

To obtain a demo or receive additional information about *ControlShop* SCADA software, go to www.fast-soft.com or contact Sales at sales@fast-soft.com or 262.238.8088. Our demo includes a demo driver allowing you to experience *ControlShop* functionality without a PLC. In demo mode, you can also try *ControlShop* online with your PLC.



ControlShop

FTLogger / FTTrender

Because it is most useful to log AND trend data, FTLogger and FTTrender are combined into one package as a cost-effective and convenient option for your data tracking needs. In addition, FTLogger and FTTrender can be launched automatically from FasTrak SoftWorks *PLC WorkShop* programming software products. FTLogger / FTTrender can record data as fast as the PLC it is connected to can relay that data—with sample rates better than .10 seconds, depending on the number of data points and communication type being used.

FTLogger and FTTrender are OPC compatible and can be used with any OPC Data Access Standard driver.

FTLogger

FTLogger collects real-time data from multiple PLC devices and logs it to multiple database platforms. Addresses are entered into a spreadsheet format with up to 30,000 addresses per log window. Data is logged based on a specific timeframe, deadband, or event. A log sheet displays the device, address, tag, and description for each point being logged, along with the current value, the time stamp of the latest reading, and the communication status.

Features – FTLogger

- Collection and logging of unlimited data points
- Ability to span database files based on size or time
- Data scaling
- Row-based and column-based configuration
- Ability to establish PLC and server backups from which to read data
- Hidden and protect mode security options
- Ability to stop data that doesn't change (deadband) from recording
- Ability to acknowledge the capture of data to the communicating device
- Data storage within standard Microsoft Access 97/2000 or SQL format
- Ability to store data continuously

The screenshot shows the FTLogger application window titled "LogDemo - FTLogger - [LogSheet1 - (LocalDemoServer)]". The main window contains a table with the following data:

Row	Device Name	Address	Tag	Description	Value	Time Stamp	Status
1	device1	B3.0	STAMP	1 second on/off log	ON D1	11:21:38.014 AM 12/16/04	Success
2	device1	F8.1	TEMPERATURE2	0.01 second sine wave	0.676095 F32	11:21:38.014 AM 12/16/04	Success
3	device1	N7.4	TANK	0.1 second linear 1-5	450 U16	11:21:38.014 AM 12/16/04	Success
4	device1	V5	TANK_FILL	1 second linear 1-10	45 U16	11:21:38.014 AM 12/16/04	Success
5	device1	400009	SINE1	0.1 second sine wave	-0.97753 F32	11:21:38.014 AM 12/16/04	Success

Below the table is a message window with the following text:

```
At 11:21:32 AM 12/16/04 data was successfully logged from LogSheet1 to logbyrowDemo.mdb.  
At 11:21:33 AM 12/16/04 data was successfully logged from LogSheet1 to logbyrowDemo.mdb.  
At 11:21:34 AM 12/16/04 data was successfully logged from LogSheet1 to logbyrowDemo.mdb.  
At 11:21:35 AM 12/16/04 data was successfully logged from LogSheet1 to logbyrowDemo.mdb.  
At 11:21:36 AM 12/16/04 data was successfully logged from LogSheet1 to logbyrowDemo.mdb.  
At 11:21:37 AM 12/16/04 data was successfully logged from LogSheet1 to logbyrowDemo.mdb.
```

The status bar at the bottom indicates: "Ready Current Device: device1 Current Format: U16 ONLINE EDIT NUM OVR".

To obtain a demo or receive additional information about ControlShop SCADA software, go to www.fast-soft.com or contact Sales at sales@fast-soft.com or 262.238.8088. Our demo includes a demo driver allowing you to experience ControlShop functionality without a PLC. In demo mode, you can also try ControlShop online with your PLC.



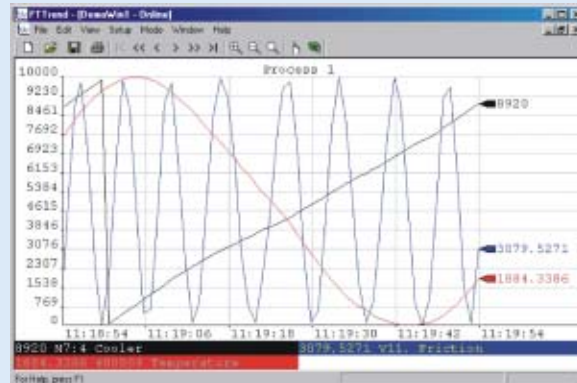
ControlShop

FTTrender

FTTrender graphs real-time and historical (logged) data from multiple devices. A data trend is illustrated by graphing a series of data values collected for a data point over a period of time. Real-time access to devices is handled through communication drivers, and the logged data comes from a Microsoft Access or SQL database file created by FTLogger or FTTrender.

Features – FTTrender

- Unlimited number of graphs and data points
- Ability to display real-time and historical data on the same graph
- Capability to export to trend history file allowing keyless view
- Capacity to trend multiple PLCs and PLC vendors on one graph
- Ability to trend spanned database files
- Marker pens, which show the current value of each data point
- Capacity to share the database with other FasTrak SoftWorks applications

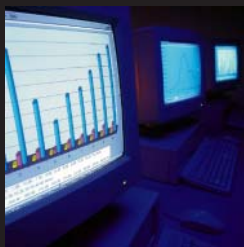


"My team and I are using *ControlShop* for graphing and charting our production line. We needed something for troubleshooting and reporting. We like the ability to use real-time and historical data on one graph. It makes tracking our changes very clear. We really like the unlimited data points. It's very fast, user-friendly, and the pricing is extremely reasonable. FTLogger / FTTrender is extremely reasonable. FTLogger / FTTrender is great for our needs!"

– Andre Belanger
Electrical Technician
Alcan LaPointe Works

To obtain a demo or receive additional information about *ControlShop* SCADA software, go to www.fast-soft.com or contact Sales at sales@fast-soft.com or 262.238.8088. Our demo includes a demo driver allowing you to experience *ControlShop* functionality without a PLC. In demo mode, you can also try *ControlShop* online with your PLC.

3



ControlShop

FTAlarm

FTAlarm is OPC compatible and can be used with any OPC Data Access Standard driver.

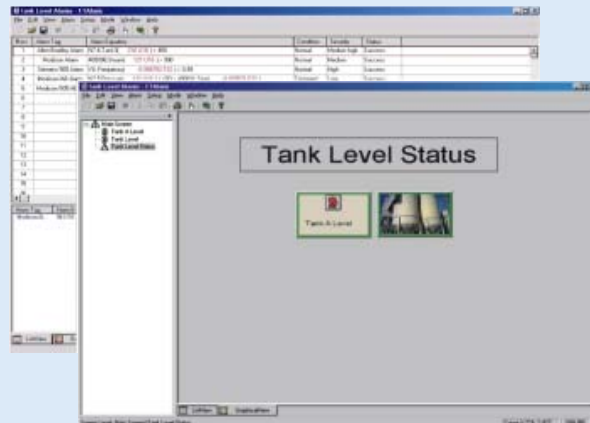
FTAlarm monitors data points specified by the user across multiple PLCs and alerts for alarm conditions. The user interface consists of a list (spreadsheet) view and a graphic view.

FTAlarm has the ability to alert when a problem occurs, as well as when a task has been completed successfully.

Features – FTAlarm

- Unlimited number of alarms
- Multiple alarm types such as text-to-speech, WAV files, email, pager, and phone
- Remote access and control via telephone
- Graphical representation of factory status
- Millisecond precision when viewing alarm history
- Alarm and call tracking via database
- Export and import of alarms

Example: A machine ran for ten hours without any problems. An email message can be sent to inform you of the positive progress.



To obtain a demo or receive additional information about ControlShop SCADA software, go to www.fast-soft.com or contact Sales at sales@fast-soft.com or 262.238.8088. Our demo includes a demo driver allowing you to experience ControlShop functionality without a PLC. In demo mode, you can also try ControlShop online with your PLC.



ControlShop

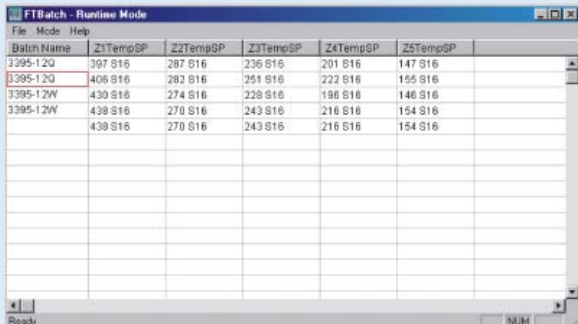
FTBatch

FTBatch is OPC compatible and can be used with any OPC Data Access Standard driver.

FTBatch allows multiple numeric values (batches or recipes) to be written to one or more PLCs at a time. These values are displayed in row and column spreadsheet-like cells. Values may be entered manually or read from external Microsoft Access or SQL database files.

Features – FTBatch

- Unlimited number of batches
- Unlimited batch size
- Event-based batches
- Ability to download a batch across multiple PLCs



Batch Name	Z1TempSP	Z2TempSP	Z3TempSP	Z4TempSP	Z5TempSP
3395-12Q	397 S16	287 S16	236 S16	201 S16	147 S16
3395-12Q	406 S16	282 S16	251 S16	222 S16	155 S16
3395-12W	430 S16	274 S16	228 S16	196 S16	146 S16
3395-12W	438 S16	270 S16	243 S16	218 S16	154 S16
3395-12W	438 S16	270 S16	243 S16	218 S16	154 S16

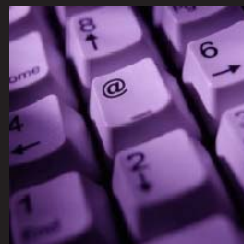


Package Options / Contents

When you order *ControlShop* you will receive:

- *ControlShop* software CD including FTLogger, FTTrender, FTAlarm, FTBatch, and communication drivers
- *ControlShop* Manual
- Stand-alone FT Data Window
- Visual Basic Demo Clients, Visual Basic Scripting Example, and ActiveX Example Controls
- Unlimited product upgrades and customer support during the first year
- FasTrak Key to attach to your computer's parallel or USB port if applicable

To obtain a demo or receive additional information about *ControlShop* SCADA software, go to www.fast-soft.com or contact Sales at sales@fast-soft.com or 262.238.8088. Our demo includes a demo driver allowing you to experience *ControlShop* functionality without a PLC. In demo mode, you can also try *ControlShop* online with your PLC.



ControlShop

Specifications

ControlShop is available as a complete suite or in the following individual packages:

- FTLogger / FTTrender
- FTAlarm
- FTBatch
- *ControlShop* Communication Drivers

Product Upgrades

Regular product upgrades may be obtained by convenient download from www.fast-soft.com.

Customer Service

When you contact us for support, you will receive immediate and accurate solutions to your questions resulting in less downtime. You will have access to the engineers who designed our software packages.

Site Licenses

Keyless site licenses are available, which eliminate tracking and losing keys.

Annual Maintenance Agreements

Following expiration of the one-year warranty period, maintenance agreements, which include unlimited technical support and product upgrades, are available for purchase on an annual basis.

OPC Compliance / PLC Communication Support

PLC and RTU support: *ControlShop* offers support for all types and vendors of PLCs including, but not limited to Siemens (S7™, S5™, and 505™), Modicon™, Square D, Allen-Bradley (MicroLogix™, ControlLogix®, and SLC™), and other major brands.

ControlShop is compliant with OPC Data Access Standard (Version 2.05 and below) communication drivers and compatible with all FasTrak SoftWorks *PLC WorkShop* software. Communication drivers are shared between FasTrak SoftWorks applications, allowing multiple applications to communicate with the same devices at the same time.

Windows Compatibility

Designed and tested under Windows 95, 98, Millennium, NT, 2000, and XP.

Speed

ControlShop can record data as fast as the PLC to which it is connected. It can relay data with sample rates better than .10 seconds, depending on the number of data points and communication type being used.

Ease of Use

Takes a minimal number of steps to set up and utilizes shared configuration.

"Everyone at the company has been wonderful, courteous, speedy, and very helpful. I really like the support. We have the ability to ask for something to be changed. Our concerns are addressed quickly and your tech support knows what they're doing compared to other tech support centers I've used in the past. You're more user-friendly compared to what we're used to. FasTrak has a good product, and I would recommend it to anyone."

– Jayme Wachowicz
Engineer
Aunt Millie's Bakeries, Inc.

ControlShop and *PLC WorkShop* are trademarks of FasTrak SoftWorks, Inc. ActiveX, Excel, Visual Basic, Visual C++, and Windows are registered trademarks of Microsoft Corporation. S7, S5, and 505 are trademarks of Siemens. Modicon is a trademark of Schneider Electric, Inc. MicroLogix and SLC are trademarks, and ControlLogix is a registered trademark of Rockwell International. Other product names mentioned herein are used for identification purposes only and may be trademarks of their respective companies.

To obtain a demo or receive additional information about *ControlShop* SCADA software, go to www.fast-soft.com or contact Sales at sales@fast-soft.com or 262.238.8088. Our demo includes a demo driver allowing you to experience *ControlShop* functionality without a PLC. In demo mode, you can also try *ControlShop* online with your PLC.

6

FasTrak SoftWorks, Inc.

P.O. Box 240065
Milwaukee, WI 53224-9003
262.238.8088
Fax: 262.238.8080
Web: www.fast-soft.com
Email: info@fast-soft.com