

# FTMaintenance



Industry statistics show that billions of dollars are spent annually to maintain production plants and equipment. Of these billions, over one third is wasted due to poor or inadequate maintenance management. If you've ever experienced unexpected equipment breakdown, you know it can lead to work stoppage, production downtime, uneven workloads, overtime, and/or emergency inventory purchasing. You need a system like *FTMaintenance*<sup>™</sup>.

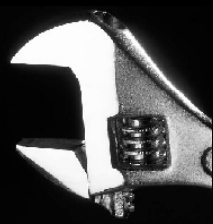
Designed for all types of facilities and manufacturing environments including manufacturing plants, municipalities, utilities, hospitals, warehouses, office buildings, and any other organization where maintenance is vital to operations, *FTMaintenance* allows you to:

- Predict maintenance needs
- Schedule equipment downtime
- Decrease operating costs
- Reduce unplanned downtime
- Decrease unplanned plant interruptions
- Anticipate and prevent equipment failures
- Increase equipment lifecycles
- Improve efficiency and cost-effectiveness of staff and equipment operations
- Optimize equipment and parts cost
- Minimize inventory carrying costs
- Balance workloads of maintenance personnel
- Reduce maintenance-related paperwork and communication costs
- Reduce capital spending

*FTMaintenance* can offer significant savings by reducing maintenance costs from 15 to 30%.

You can expect a return on your investment in *as little as six months*.

**FaSTrak**  
SoftWorks, Inc.



# FTMaintenance

## FTMAINTENANCE PROVIDES:

### Predictive Maintenance

By identifying the need for maintenance before a crisis develops, *FTMaintenance* helps you avoid expensive production shutdowns and extend your equipment life cycles.

*FTMaintenance* allows you to specify conditions that require maintenance, monitor factory floor hardware for those conditions, notify the appropriate personnel when repairs are needed, and automatically generate work orders to have the necessary maintenance performed. Work orders may be set to activate automatically or manually pending approval. Communication – through the use of OPC servers – allows *FTMaintenance* to work with virtually any PLC, RTU, or hardware device.

### Automatic Work Order Generation

*FTMaintenance* provides automatic work order generation and automatic daily printouts and/or email distribution of work orders. Maintenance for multiple pieces of equipment can be scheduled on a single work order and reference documents and files, such as schematics and CAD drawings, can be associated and printed with the work order. Free-form text fields are provided allowing you to include notes regarding the work that has been performed.

### Multi-Cycle PM Scheduling

*FTMaintenance* allows a single master plan to be created for each piece of equipment, which includes all desired scheduling intervals and runtimes. Only tasks applicable to the specific cycle appear when the work order is activated.

### Scheduling Calendar

*FTMaintenance* provides a graphical, calendar view of entire work order schedules, including overdue work orders. From the calendar, work order details can be accessed, sorted, and printed.

To schedule a demonstration, place an order, or receive additional information, contact Sales at [sales@fast-soft.com](mailto:sales@fast-soft.com) or 262.238.8088.

Alarm Tag	Alarm Description	Alarm Equation	V/I Type	V/I Status	V/I Ref	Severity	Alarm Time	Employee Name
Alarm2	BE3-H-003	DM	Closed	2006072108			07/21/2006 10:39:04 AM	FTMAINTENANC
Alarm2	BE3-H-003	DM	Closed	2006072108			07/21/2006 11:43:36 AM	FTMAINTENANC
Alarm2	BE3-H-003	DM	Closed	2006072107			07/21/2006 11:54:42 AM	FTMAINTENANC
Alarm2	BE3-H-003	DM	Closed	2006072108			07/21/2006 11:55:06 AM	FTMAINTENANC
Alarm2	BE3-H-003	DM	Closed	2006072106			07/21/2006 3:30:07 PM	FTMAINTENANC
Alarm2	BE3-H-003	DM	Closed	2006072107			07/21/2006 3:30:30 PM	FTMAINTENANC
Alarm4	BE3-H-100	DM	Closed	2006072709			07/21/2006 11:01:08 AM	FTMAINTENANC
Alarm4	BE3-H-003-100	DM	Closed	2006072702			07/21/2006 11:03:30 AM	FTMAINTENANC
Alarm4	BE3-H-003-100	DM	Closed	2006072703			07/21/2006 12:54:29 PM	FTMAINTENANC
Alarm4	BE3-H-003-100	DM	Closed	2006072704			07/21/2006 12:55:53 PM	FTMAINTENANC
Alarm4	BE3-H-003-100	DM	Closed	2006072705			07/21/2006 12:10:49 PM	FTMAINTENANC
Alarm4	BE3-H-003-100	DM	Closed	2006072706			07/21/2006 12:24:33 PM	FTMAINTENANC
Alarm4	BE3-H-003-100	DM	Closed	2006072707			07/21/2006 12:25:45 PM	FTMAINTENANC
Alarm4	BE3-H-003-100	DM	Closed	2006072708			07/21/2006 1:53:12 PM	FTMAINTENANC

**DM Active Work Order Form** 94050308

Work Order No: 2005001002 Job No: DMTPR01

Symptom: PRESS IS NOT RUNNING TO SPECIFICATION

Requested By: PRODUCTION Date Issued: 09/6 10:00

Request No: 001 Date Required: 09/6 10:00

Priority: NORMAL Date Started: 09/6 10:00

Work Type: REPAIR OR RESET Actual On-site: / /

SNR: ALL Date Completed: / /

Cost Center: 20000 Time Completed: / /

Maintenance Code: MECHANICAL

Equipment No: PR001 Equipment Name: TRM PRESS Location: CENTRAL PLANT

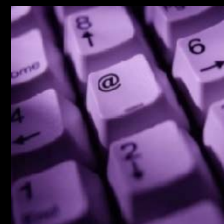
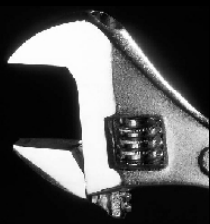
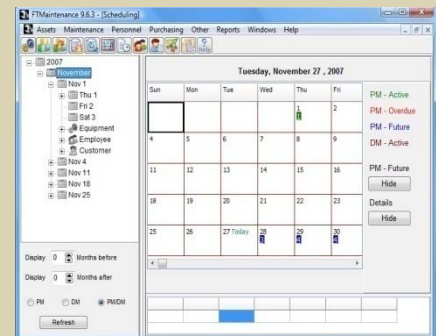
Employee No: 10012002 Employee Name: CARL WELSON Labor Code: MECH-E Est. Hours: 1.00 Actual DM Hours: /

Part No: H50001 Part Name: HOSE PACKAGE Qty Allocated: 1 Qty Pulled: /

Task No: Description: INSPECT EQUIPMENT AND AUDIT OPERATING CONDITION. REPORT CONDITION OF EQUIPMENT ON WORK ORDER. Labor Code: MECH-E

Task Description: TO INSURE WRENCH

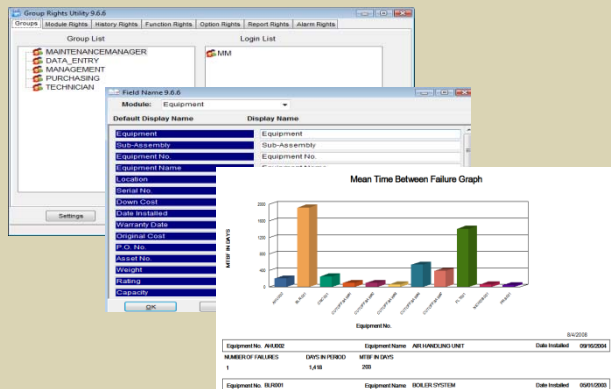
WO Desc: 13612002 CALL SHIFT SUPERVISOR WHEN WORK IS COMPLETED.



# FTMaintenance

## Additional Capabilities

- **Comprehensive Reporting** – Quickly access the data that drives management decisions. *FTMaintenance* includes more than 100 pre-formatted reports and graphs that appear in Crystal Reports™ format, third-party software that can be used to modify *FTMaintenance* reports or create new reports.
- **Field Name Customization** – Change any field label and add your own fields based on your unique business practices.
- **Global Language and Currency Support** – View and edit data using your own currency and language.
- **Advanced Security** – Designate each user's access to the system.



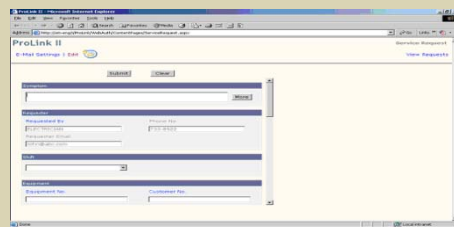
## Optional Modules

Enhance your use of *FTMaintenance* with the following optional modules:

- **Barcode** – Enter data remotely with handheld scanners. Information can be collected on work orders, equipment runtime can be updated, and physical inventory can be adjusted.
- **ProLink Web Browser Service Request** – Send requests for service from anywhere, via the web or your company's intranet.
- **M-Site** – Organizations with multiple plants, facilities, or locations can easily access multiple databases.

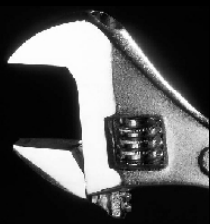


Barcode Module



ProLink

To schedule a demonstration, place an order, or receive additional information, contact Sales at [sales@fast-soft.com](mailto:sales@fast-soft.com) or 262.238.8088.



# FTMaintenance

## Package Contents

When you order *FTMaintenance*, you will receive:

- *FTMaintenance* CD(s)
- *FTMaintenance* User Manual
- Unlimited product upgrades and customer support during the first year

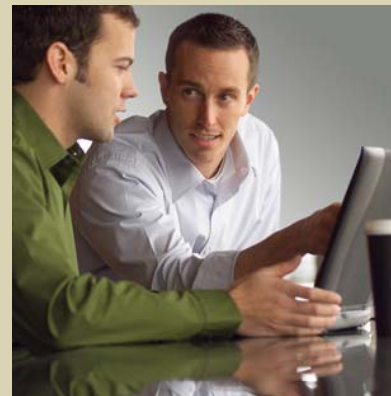
## Annual Maintenance Agreements

Following expiration of the one-year warranty period, maintenance agreements—which include unlimited technical support and product updates—are available for purchase on an annual basis.



## Product Upgrades

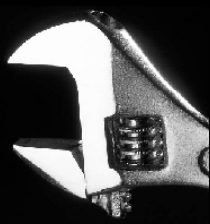
Regular product upgrades may be obtained by contacting FasTrak SoftWorks. Notifications via email are sent for all major feature releases.



## FTMaintenance Services

FasTrak provides extensive support to customers seeking to implement *FTMaintenance* including data importation, consultation, training, implementation, and system integration. Our experienced team will help ensure a well-defined and smooth transition from your current process to *FTMaintenance*.

To schedule a demonstration, place an order, or receive additional information, contact Sales at [sales@fast-soft.com](mailto:sales@fast-soft.com) or 262.238.8088.



# FTMaintenance

## TECHNICAL REQUIREMENTS

*FTMaintenance* runs in Windows 2000, XP, and Vista environments. All *FTMaintenance* information is stored in a fully relational database, which provides flexibility, rapid access, and efficiency to accommodate greater amounts of information as a company's information level grows.

### Databases Supported<sup>1</sup>

*FTMaintenance Professional* products are delivered with Microsoft SQL Server 2005 Express database

### *FTMaintenance Enterprise* (database supplied by customer)

MS SQL Server 2000 w/SP3, Microsoft SQL Server 2005, or Oracle 9i or above

### Hardware Requirements

#### PC Platform

Recommended – 1 GHz or greater

#### Memory

Recommended – 512 MB or greater

#### Hard Disk Space Required

100 MB for the program, 100 MB minimum for database (for *FTMaintenance Expert* or *FTMaintenance Professional*)  
*FTMaintenance Enterprise* databases require 725 MB minimum on server

#### Accessories

CD-ROM drive and Windows compatible printer

### Operating Systems<sup>2</sup>

#### Client Workstation

Windows 2000 Pro, w/SP4 or later  
Windows XP Professional w/SP1 or later  
Windows Vista Business or Enterprise Editions

Note: Home / consumer versions of XP and Vista are not supported.

### Database Operating System<sup>3</sup>

#### *FTMaintenance Professional*

Windows 2000 Pro, w/SP4 or later  
Windows XP Professional w/SP1 or later  
Windows 2000 Server w/SP4  
Windows Server 2003

#### *FTMaintenance Enterprise* MS SQL Server

Windows 2000 Server w/SP4  
Windows Server 2003

#### *FTMaintenance Enterprise* Oracle

Any operating system supported by Oracle



<sup>1</sup> If *FTMaintenance Professional* SQL 2005 Express database is installed on a Windows XP computer with Service Pack 2, additional clients trying to access the database will fail due to new security restraints. If you desire to install this configuration please refer to Microsoft Knowledge Base Article 841249.

<sup>2</sup> Must use Internet Explorer v. 6.0 SP1 or later.

<sup>3</sup> System response time is dependent on the number of active users, the processor speed of the Client and Server hardware, the speed and traffic on the network, the size of the CMMS database, and the complexity of the specific function being completed.

*FTMaintenance* is a trademark of FasTrak SoftWorks, Inc. Windows and MSDE are registered trademarks, and Project is a trademark of Microsoft Corporation. Crystal Reports is a trademark of Business Objects SA. Palm OS is a registered trademark of PalmSource, Inc. Oracle is a registered trademark of Oracle Corporation. Other product names mentioned herein are used for identification purposes only and may be trademarks of their respective companies.

FasTrak SoftWorks, Inc.

P.O. Box 240065

Milwaukee, WI 53224-9003

262.238.8088

Fax: 262.238.8080

Web: [www.fast-soft.com](http://www.fast-soft.com)

Information: [info@fast-soft.com](mailto:info@fast-soft.com)