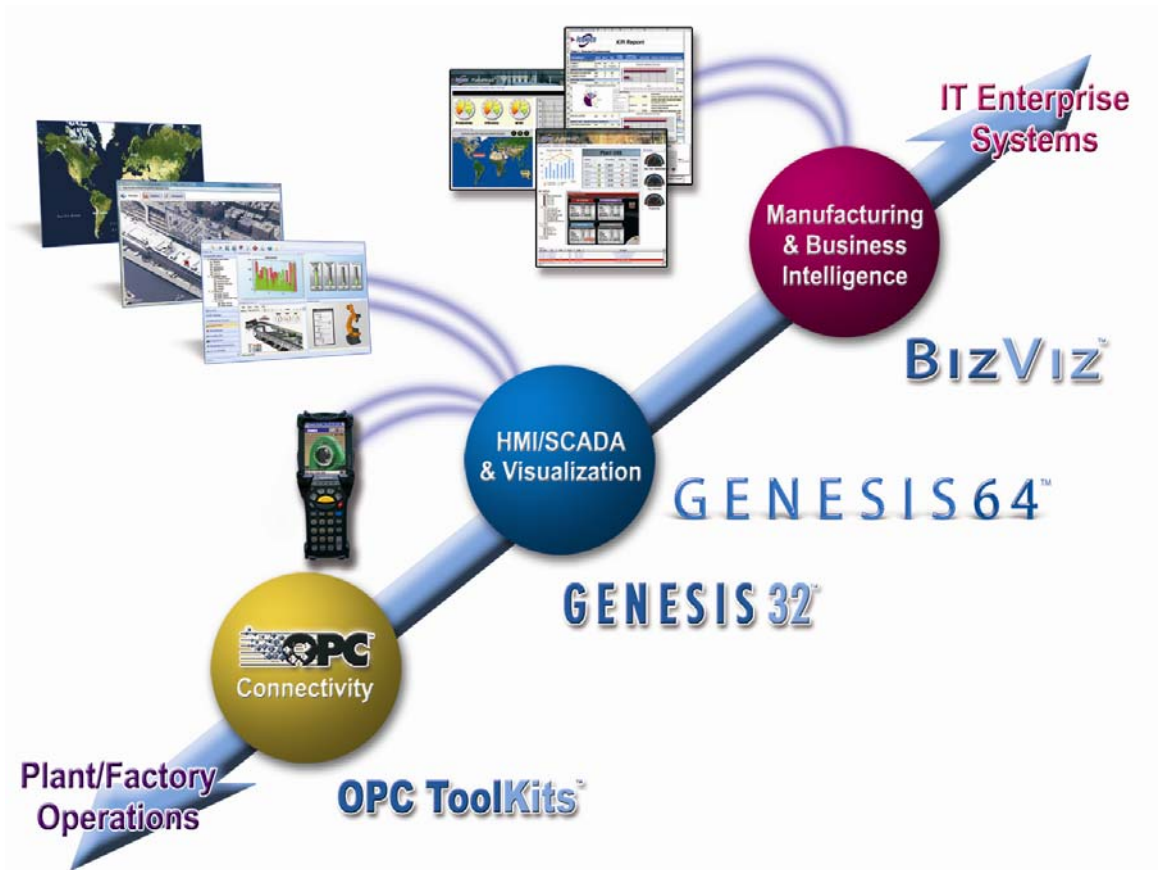


VCRWorX™

V9.1 Product Bulletin

April 2008



Visualize Your Enterprise™

100 Foxborough Blvd
Foxborough, MA 02035

508.543.8600

Fax 508.543.1503

E- mail info@iconics.com

www.iconics.com



Microsoft
GOLD CERTIFIED
Partner



VCRWorX V9.1 Product Bulletin



April 2008

VCRWorX™32 provides plant personnel with a new way to visualize historical data from the plant floor. From the friendly VCRWorX on-screen control, users can select a start time, playback speed, and step mode for viewing. Users can compare live views with historical views, or compare the current production run against a "golden batch" and make real-time set-point changes resulting in less waste. VCRWorX is designed to work on GENESIS32 clients as well as within WebHMI clients. Using the GENESIS32 "one development tool for multiple targets," it is easy to add VCRWorX to any existing application.

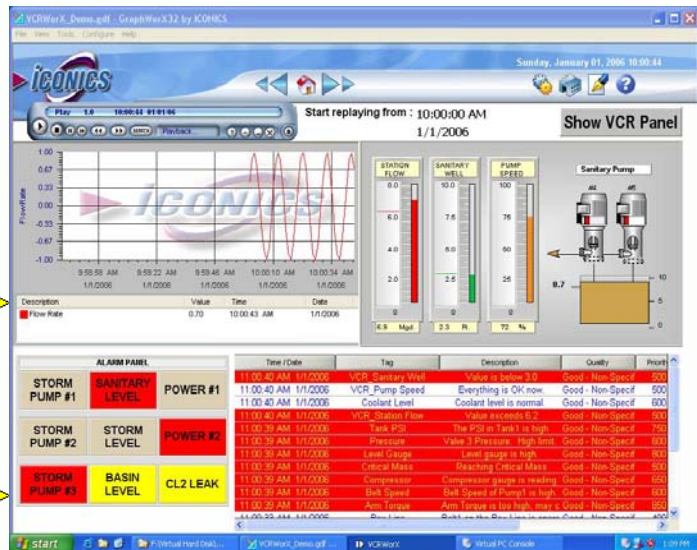
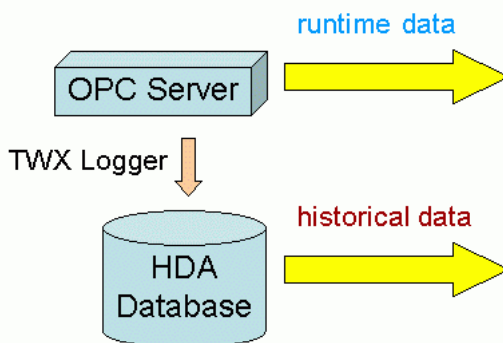


Features and Benefits

Features and Benefits	
<ul style="list-style-type: none"> • Replay OPC Data • Graphics Playback • Trends Re-Plot • Alarms Playback • View What the Operator Saw 	<ul style="list-style-type: none"> • Fast Forward, Rewind • Change Speed • Select Key Events for Range • Change Skins, Layouts • Browse for Tag connection and range

Historical Data Replay

- VCRWorX32 Feature
- VCRWorX32 WEBHMI Integration



New Modular for Historical Playback (VCRWorX32)

VCRWorX32 is a powerful tool in GENESIS32 that enables the replay and reanimation of graphical, historical and alarm data. Features of VCRWorX32 replay include:

- Replay of OPC data
- Reanimation of graphics
- Re-plotting of trends
- See what the operator saw through replay of graphical displays
- VCRWorX32 Control Panel with customizable skins/layouts
- Change the replay speed
- Specify time and date ranges for data replay
- Search for key events, tags, and expressions

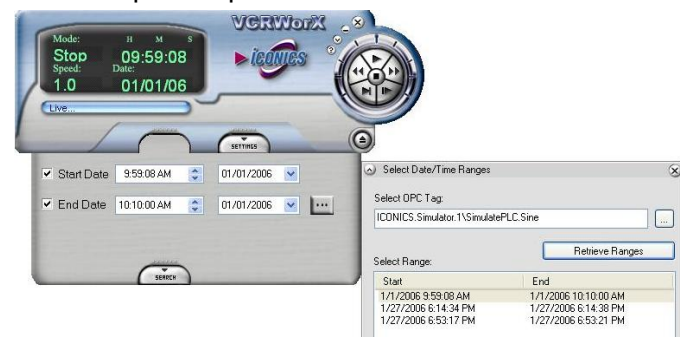


The VCRWorX32 Control Panel is the interactive user interface that enables the historical data replay time and date settings. This control floats on top of your GraphWorX32 screen and works just like your VCR or DVD controls used to playback your favorite movies. From this intuitive control operators can specify time and date ranges for replay, fast forward and rewind, change the replay speed, and search for key events, tags, or expressions. The appearance of the VCRWorX32 Control Panel is fully customizable with the ability to select a different skin and complete customization of the layout. The VCRWorX32 Control Panel can be launched from the GraphWorX32, AlarmWorX32, and TrendWorX32 containers during runtime mode with one click on the Tools menu.

VCRWorX Control Panel

The VCRWorX Control Panel is the user interface that enables you to configure your historical data replay time and date settings. From this control panel operators can:

- See what the operator saw through replay of graphical displays
- Specify time and date ranges for replay
- Fast forward and rewind
- Change the replay speed
- Search for key events, tags, or expressions
- Customize the layout and appearance using skins
- Search for a Tag and Time Range for Replay



VCRWorX Control Panel Interface

The VCRWorX Control Panel contains the following user interface components:

- **Time Field:** Displays the current mode (e.g. Play, Stop, Fast Forward, Rewind, Step, Pause, etc.)
- **Status Bar:** Indicates live mode or playback mode
- **Menu Buttons:** Switch between normal mode and "micro" mode, minimize the panel and more
- **Load Skin Button:** Enables you to select a skin to change the Control Panel appearance
- **Replay Control Buttons:** Play, Stop, Rewind, Fast Forward, Step, the replay speed
- **Search Button:** Specifies the time/date and/or expression range settings for data replay
- **Settings Button:** Specifies the scan rate for data replay

Using the VCRWorX32 Control Panel Is Easy & User Friendly

Playing back your graphics with the new VCRWorX32 control panel is the easiest method on the market for a graphical representation of historical information. In just three steps you will be viewing valuable historical information and see alarms as they happen back in time!

1. Select a date and time for the data reply.



2. Setting the Replay Scan Rate for data replay. Scan rate can be selected from a drop-down list box. The scan rate determines the frequency (in milliseconds) of data updates during replay mode.



3. Use the Replay Control Buttons that are similar to the buttons on a VCR or DVD player control console. The buttons allow you to Play, Stop, Rewind, Fast Forward, Step, and Slow down the replay display.

- **Play:** Switches the display to replay (playback) mode.
- **Stop:** Switches the display back to live (real-time) runtime mode.
- **Fast Forward:** Speeds up the display in replay mode.
- **Slow Motion:** Slows down the display in replay mode.
- **Reverse:** Rewinds the display in replay mode.
- **Pause:** Stops the display in replay mode.
- **Step:** Moves the display forward in one-second intervals while in pause mode.



Cost Savings and Productivity

The market is demanding solutions that provide a real-time visualization connection to databases such as Microsoft SQL Server[®], MSDE, Oracle[®], and Microsoft Access, as well as the integration of real-time manufacturing and business visualization. ICONICS' newest HMI/SCADA visualization product incorporates several unique capabilities that address this market demand, such as VCR-like replay functions, which allow users to past history through their HMI systems.

VCRWorX32 provides users with a new way to visualize historical data from manufacturing and business systems. From an easy-to-use VCRWorX graphical user interface, users can select a start time, playback speed, and step mode for viewing information. Users can also compare live views with historical views, or compare the current production run against "ideal data" and make set-point changes, resulting in greater productivity and efficiency. VCRWorX is designed to work with GENESIS32 and WebHMI clients. Using the ICONICS "one development tool for multiple targets" technology, it's easy to add VCRWorX to any existing application.



Operating Systems Supported

GENESIS32 fully supports Microsoft Windows 32 operating systems including:

- Windows XP
- Windows XP SP2
- Windows 2000 Server
- Windows 2000 Workstation
- Windows Server 2003

System Requirements

GENESIS32 requires the following hardware and software components: System requirements may vary based on application size and system performance requirements and loading factors.

Minimum Hardware and Operating System Requirements:

- 600 MHz or higher processor.
- 256 MB or more if running with OPC Servers.
- At least 600 MB of available hard disk space.
- CD ROM Drive
- A SVGA monitor (256 colors) or better.
- Windows 2000, Windows XP Professional, or Windows Server 2003.
- A mouse or other compatible pointing device.



About ICONICS

ICONICS is a leading provider of award-winning enterprise manufacturing intelligence and automation software solutions.

ICONICS' solutions deliver real-time visibility into all enterprise operations and systems, helping companies to be more profitable, more agile, and more efficient. As a Microsoft Gold Certified Partner, ICONICS designs its solutions from the ground up to take maximum advantage of Microsoft .NET and SharePoint Portal Server technology, offering an unprecedented level of performance and ease of use.

Our award-winning GENESIS32 and new GENESIS64 automation software solutions can improve productivity, reduce integration and operating costs, and optimize your asset utilization, giving your organization a competitive edge. All ICONICS products are based on "open standards," using OPC-to-the-Core technology leveraging proven architecture and lower TCO of mainstream Microsoft platform, and connect to your existing infrastructure. We have more than 225,000 applications running worldwide serving top manufacturing companies.

ICONICS' BizViz suite of products provides real-time manufacturing intelligence from the production floor to the boardroom, turning real-time information into your competitive advantage.

WORLDWIDE OFFICES

World Headquarters

ICONICS, Inc.
100 Foxborough Blvd.
Foxborough, MA 02035 USA
ph: 508-543-8600
fx: 508-543-1503
info@iconics.com

Czech Republic

ph: 420-37-718-3420
fx: 420-37-718-3424
czech@iconics.com

France

ph: 33-045-019-1180
fx: 33-045-001-0870
france@iconics.com

Germany

ph: 49-224-114-82233
fx: 49-224-114-82686
germany@iconics.com

Italy

ph: 39-347-819-9250
fx: 39-010-601-4091
italy@iconics.com

Netherlands

ph: 31-252-228-588
fx: 31-252-226-240
holland@iconics.com

Australia

ph: 61-297-273-411
fx: 61-297-273-422
australia@iconics.com

China

ph: 86-130-684-86069
china@iconics.com

Hong Kong

ph: 852-21-505-797
china@iconics.com

United Kingdom

ph: 44-138-427-5500
fx: 44-138-440-1642
info@iconics-uk.com

GENESIS64™
Next Generation in Automation Software

GENESIS32™
Connect, Analyze & Visualize

BizViz™
Manufacturing Intelligence